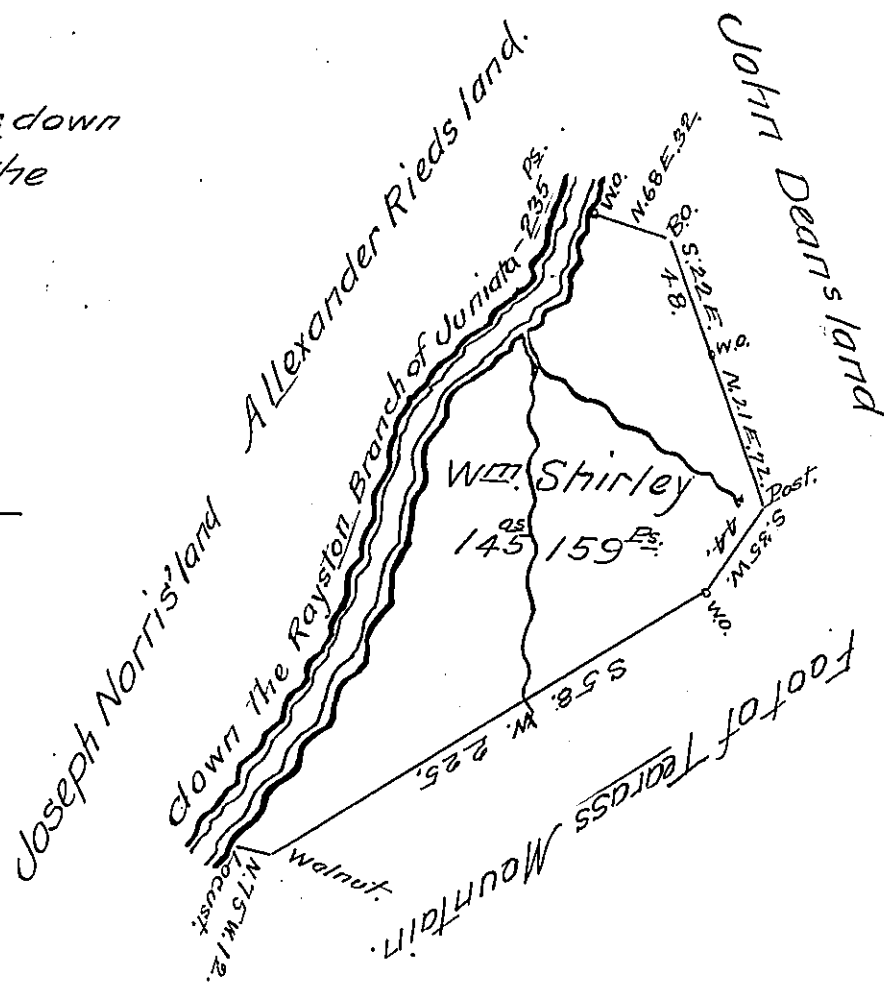


Courses & distances down
the-Branch-from the
Locust to the W.O.

N. 38 E. 32.
N. 26 E. 86.
N. 19 E. 97.
N. 53 E. 68.
N. 15 E. 42 W.O.
335



Situate on the Rayston Branch of Juniata River in
Hopwell Township Huntingdon County containing 145^{ac} 159^{ac}
and the usual allowance of Six Per Cent for Roads. Surveyed
the 4th Day of May 1789 In Pursuance of a warrant dated
the 12th Day of July 1788

John Canon D.S.

To John Lukens Esquire S.G.

IN TESTIMONY that the above is a copy of the original remaining on file in
the Department of Internal Affairs of Pennsylvania, made
conformably to an Act of Assembly approved the 16th day of
February, 1833, I have hereunto set my Hand and caused
the Seal of said Department to be affixed at Harrisburg,
this thirty first day of January 1907.

Isaac P. Brown
Secretary of Internal Affairs.